



EMBARK ON THE TRANSFORMATIONAL JOURNEY OF QUALITY MATURITY AND OPERATIONAL EXCELLENCE WITH SONATA'S MANAGED TESTING SERVICES

BUSINESS CHALLENGES

Shift and acceleration towards digital transformation and infrastructure in the information technology space has seen a significant momentum in the last decade. Enterprises are trying to keep pace with this shift and meet the rising market demand of faster deliverables by adopting reliable and predictable engineering methods.

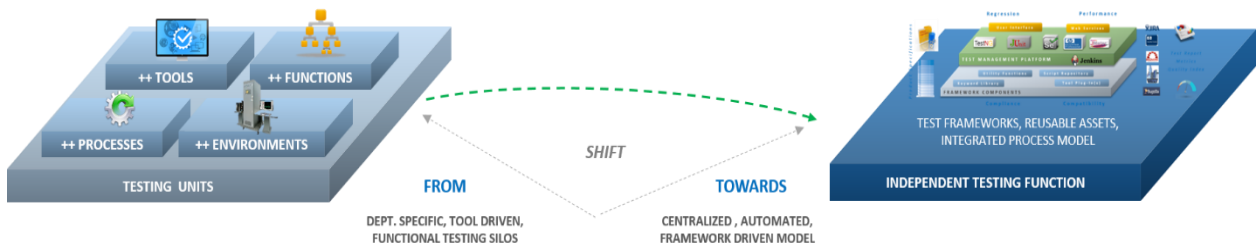
- Organizations are shifting towards a more holistic approach to ensuring quality, both in product, process and experience.
- Demand for higher productivity, is pushing organizations to better their engineering methods with a 'identify and fix early' approach, by left-shifting the quality process in the development model.
- With comprehensive testing models being adopted, the focus has shifted toward the agility and coverage of the process, tool optimization, reusability and automation, while ensuring the product functioning to the specification.

The fundamental demarcation of development and testing activities however continues to drive siloed execution of testing operations and a weak coupling of testing processes in the overall engineering model.

Traditional engineering processes are being reinvented by adding an agile and automation spin to design, to allow for a more accelerated product delivery. Organizations are further moving towards taking a more managed approach to quality monitoring by instituting independent testing functions or partnering with vendors to provide managed services.

Sonata's Managed Testing Services model is a transformational approach to Test Engineering that helps customers accelerate their digital transformation journey, while achieving operational excellence and quality maturity in a cost effective way.

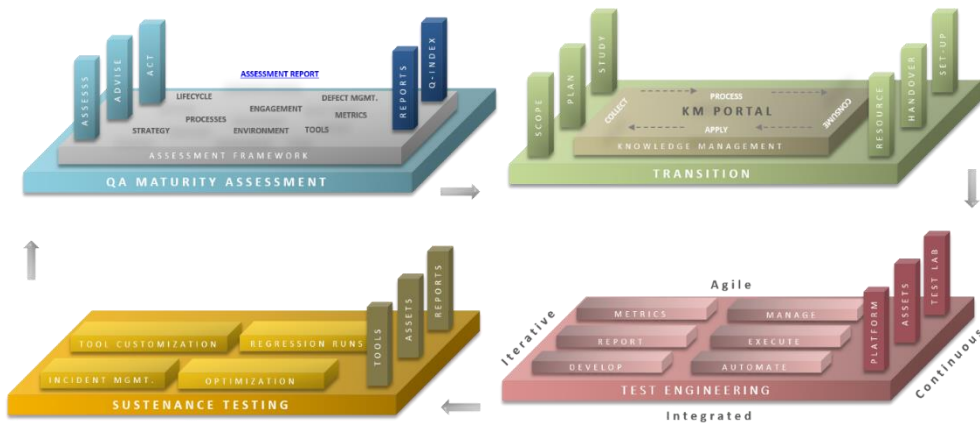
INDEPENDENT & MANAGED TESTING MODEL



The key to ensuring the testing model is in line with the operating dynamics of the technology and the demand market, is to ensure the Testing ecosystem is flexible and can realign itself through technology and infrastructure modernization, centralization execution, streamlining of processes, templating of reporting, and an ultimate integration and alignment with the underlying engineering model.

TEST ENGINEERING MODEL

A holistic approach to ensuring quality is to implement a model that focusses on all the key aspects of Test Engineering including Process Maturity Assessment, Automation, Knowledge Management, Test Management and Sustenance Engineering.



Sonata's approach to Test Engineering focusses primarily on ensuring a continuous improvement in the process maturity index. Assessed periodically, the maturity index is arrived at using Sonata's QA Assessment model.

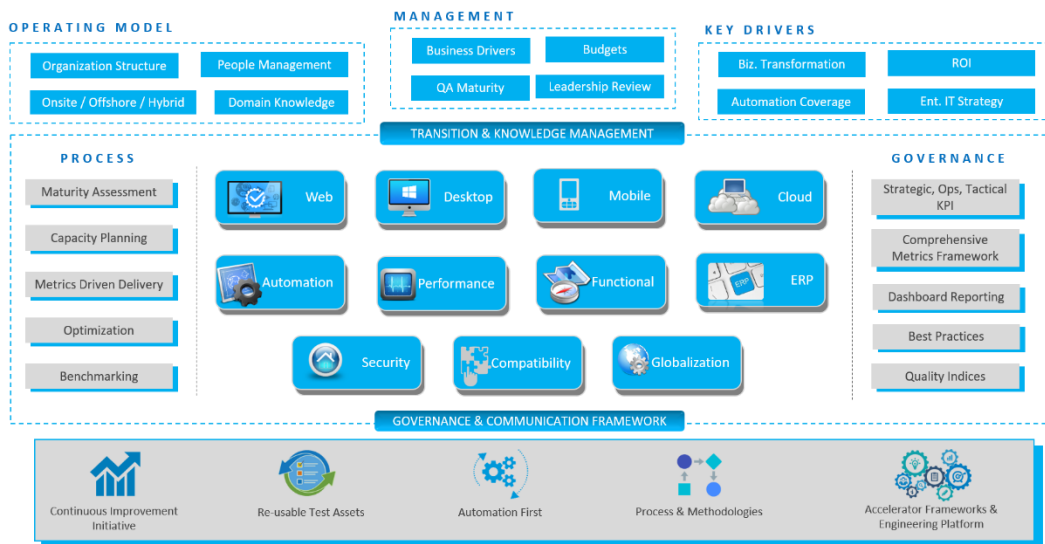
MANAGED TESTING SERVICES

Sonata's Managed Testing Services Model is a transformational approach to testing and quality supported by a framework of an independent test organization, process governance, environment management and knowledge management that helps achieve business acceleration with faster time to market and optimization of operational costs.

Evolved from an independent testing approach, the managed approach to testing that Sonata's takes focusses on providing testing services over a wider spectrum – of technology, tools, domain and applications.

Key Features include –

- Independent Testing Solutions Partner Model
- Cost Effective Global Engagement Model
- Output-based Delivery
- Complete Ownership of the Testing Operations and Delivery
- Metrics Driven Governance
- Maturity Assessment Framework
- Continuous and Measured Improvement
- Knowledge Management Process



Supported by a comprehensive metric driven governance model built in, the managed approach helps organizations to optimize their overall operational costs and enhance their process efficiency by adopting a centralized, integrated approach to tool implementation and asset reusability.

Managed approach driven by a need to centralize testing operations helps organizations dealing with a fragmented approach to quality management, by supporting wider tool and technology spectrum with tool customizations and integrations, standardizing process and governance with metrics driven model and leverage internal expertise and experience by building the experience into reusable assets and knowledge blobs.

BENEFITS

Our Managed Testing Services Framework delivers significant benefits to the business including:

- Significantly reduced total cost of testing operations
- Measurable quality improvements including early detection and leakage prevention of defects and faster time market
- Integrated Test Platform
- "Automation" First Approach
- "Shift Left" Model
- Measurable Quality Process Maturity
- Effective Knowledge Management

SUCCESS STORIES

Our enterprise customers embarked on the journey to transform their testing activities with our managed testing services model and saw significant savings and improvements including 45% cost savings (ROI) and 38% reduction in the time to market with test automation and re-usable assets and garnered benefits of an improved resource rationalization of up to 30%, up to 40% reduction in TCO and 40% reduction in time to market.

Sonata has a solid track record delivering long-term engagements with enterprise customers and Fortune 500 Companies in various industry verticals including Pharma, Travel and Finance Sectors.

The effective mix of technical know-how coupled domain expertise, strong governance structure, robust knowledge management processes and framework driven operational model of Sonata's MTS framework, helps Enterprises embark on the journey of testing transformation and process maturity.

Sonata Software is a global IT solutions firm focused on enabling platform based digital business and technology transformation for enterprises in the Travel, Retail, Distribution and Software industries. Sonata's products and platforms, anchored on its proprietary Platformation methodology, reflect the company's commitment to enable connected, intelligent, open and scalable business systems.

Sonata's portfolio of products and platforms include Rezipia Digital Travel Platform, Brick & Click Retail Platform, Modern Distribution Platform, Kartopia E-Commerce Platform, Halosys Unified Enterprise Mobility Platform and RAPID DevOps, CloudOps and Testing Platform. These platforms have been deployed by leading enterprises across the globe to achieve future ready digital businesses.



USA | Dallas · Fremont · Bridgewater · Redmond · Atlanta · Chicago

UK & Europe | Brentford · Frankfurt · Amsterdam · Paris · Copenhagen

Asia | Bangalore · Hyderabad · Singapore · Dubai · Doha

ANZ | Sydney · Melbourne